

The Collection Efficiency of Particles on a Ribbon in a Turbulent Flow

Ranjith Divigalpitiya
3M Canada Company

Outline

- Need: turbulent flow analysis
 - RANS: $k-\varepsilon$ model
- Experiment from literature
- Particle trajectories
- Collection efficiency
- Comparison with data

Experiment

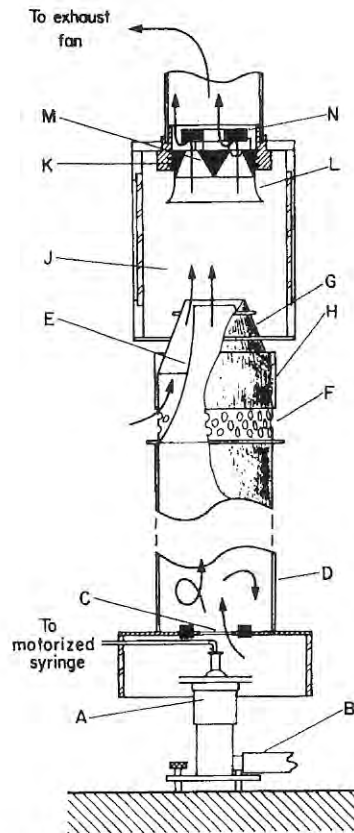


FIG. 1. Vertical section through wind tunnel. The overall height is about 7 ft.

A - aerosol generator

J – collection chamber

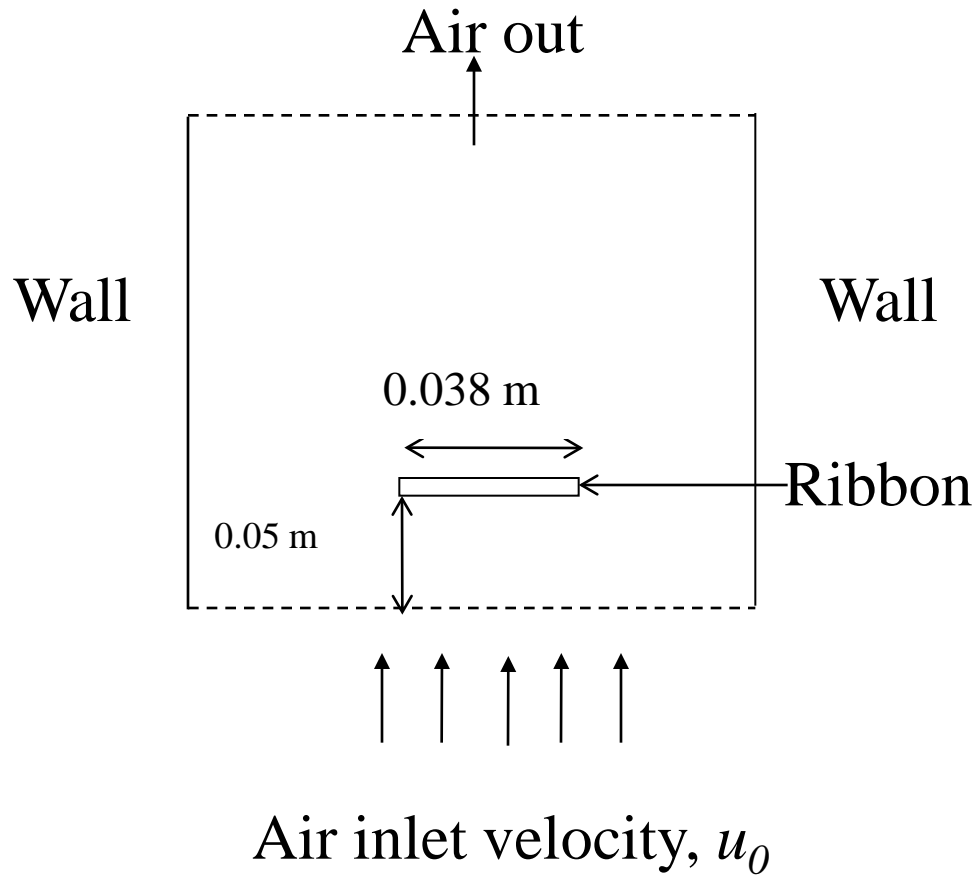
20 cm x 20 cm x 30 cm

U_0 : 2.2 – 6.2 m/s

Re: 200 - 8500

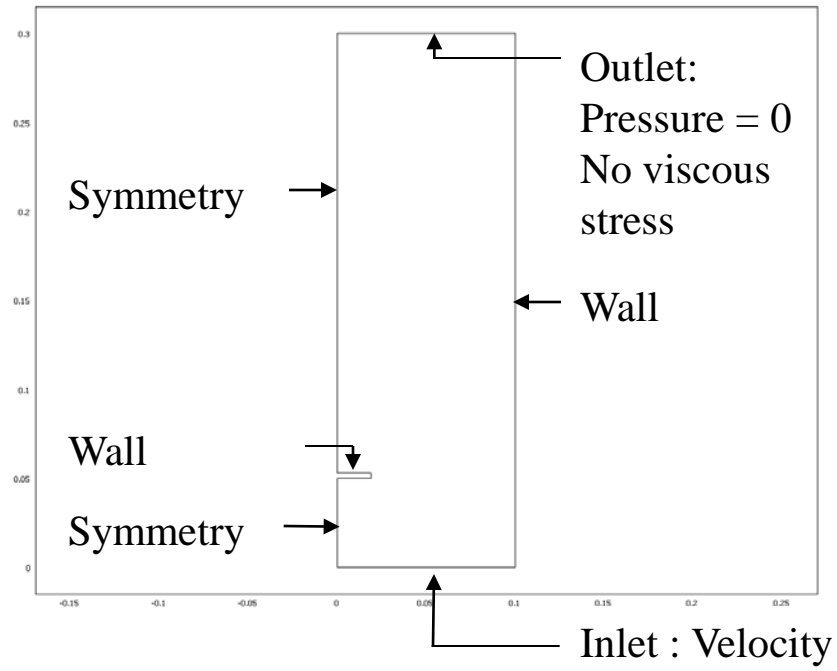
May & Clifford. 1967, Ann. Occup. Hyg. 10, pp.83-95.

Schematic of problem



Boundary Conditions

- Chemical engineering
- Turbulence $k-\varepsilon$ model - Stationary



Equations

Eqn. of motion: $m_p \frac{du_i}{dt} = F_{KR} + F_B$ ⁰

$$F_{KR} = \pi r_p^2 \rho (u - u_p)^2 [1.84 \text{Re}_p^{-0.31} + 0.293 \text{Re}_p^{0.06}]^{3.45}$$

$$\text{Re}_p = (u - u_p) 2r_p \rho / \mu$$

$$\text{Stk\#} = \frac{\rho_p U_o d_p^2}{18\mu h}$$

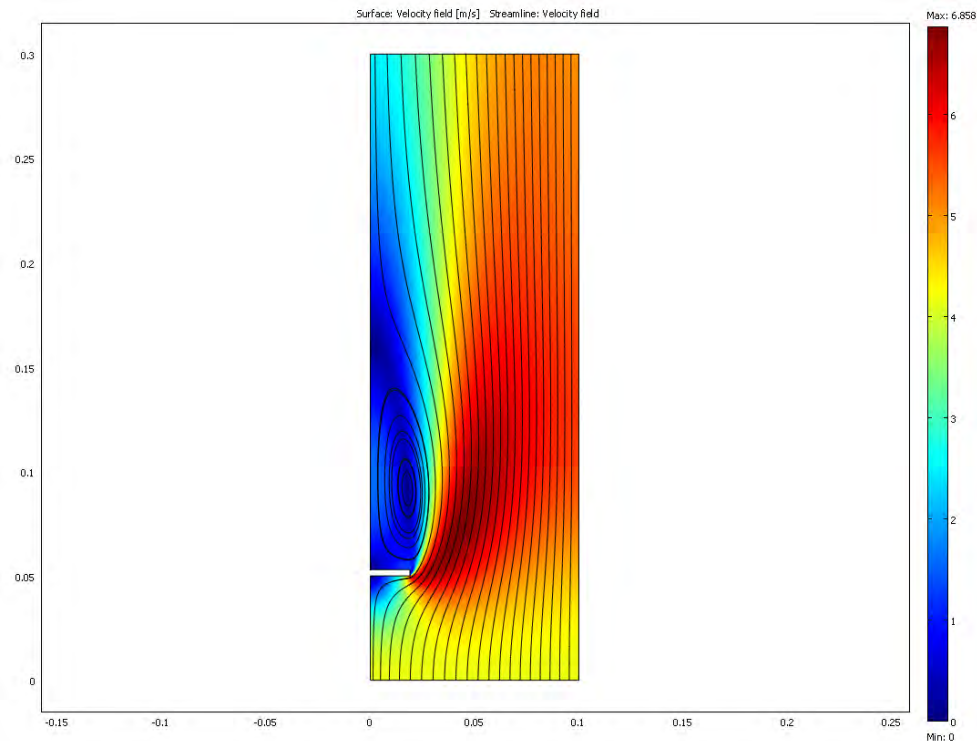
$$E = \frac{\text{Flux of particles deposited on the ribbon}}{\text{Flux of particles entering the projected area of the ribbon}}$$

Parameters

Parameter	Value	Unit
Density of air ρ	1.2	kg/m ³
Viscosity of air μ	1.8 x 10 ⁻⁵	Pa.s
Density of butyl phthalate particles ρ_p	1050	kg/m ³
Range of radius of particles <i>partr</i>	10 – 130	micron
Velocity of free-air u_0	4.2	m/s

Velocity Field & Streamlines

$Re = 5200$



Particle Trajectories

Input for Khan & Richardson Force term

- Particle size ($partr$)
- Particle density (rho_chns)

Release particle

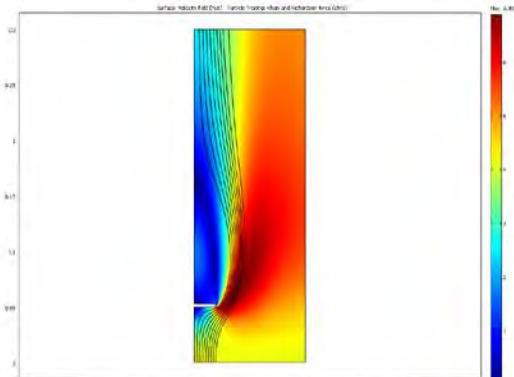
- 100 particles of same size at the bottom equally spaced apart
- Initial velocity (u,v)

Trace trajectories

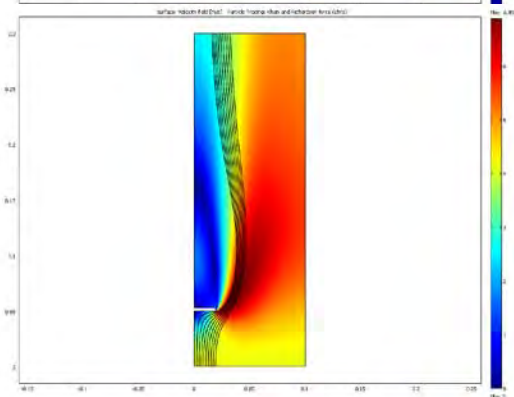
- Use MATLAB to repeat at different Stokes numbers
- Count how many meet ribbon using *endpts.1*
- Collection efficiency

Effect of $Stk \#$

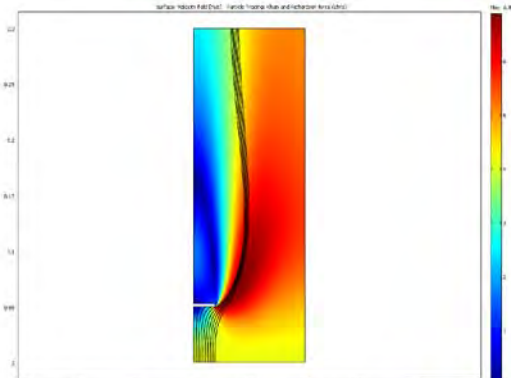
$Stk = 0.006$



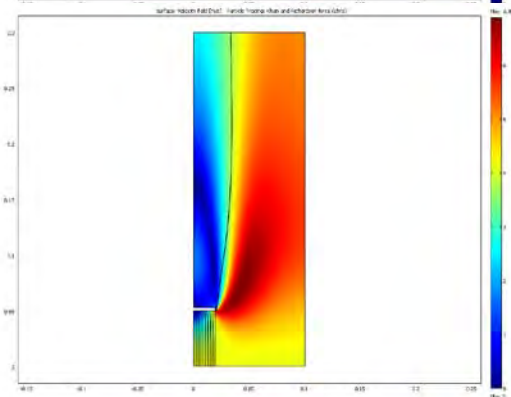
$Stk = 0.01$



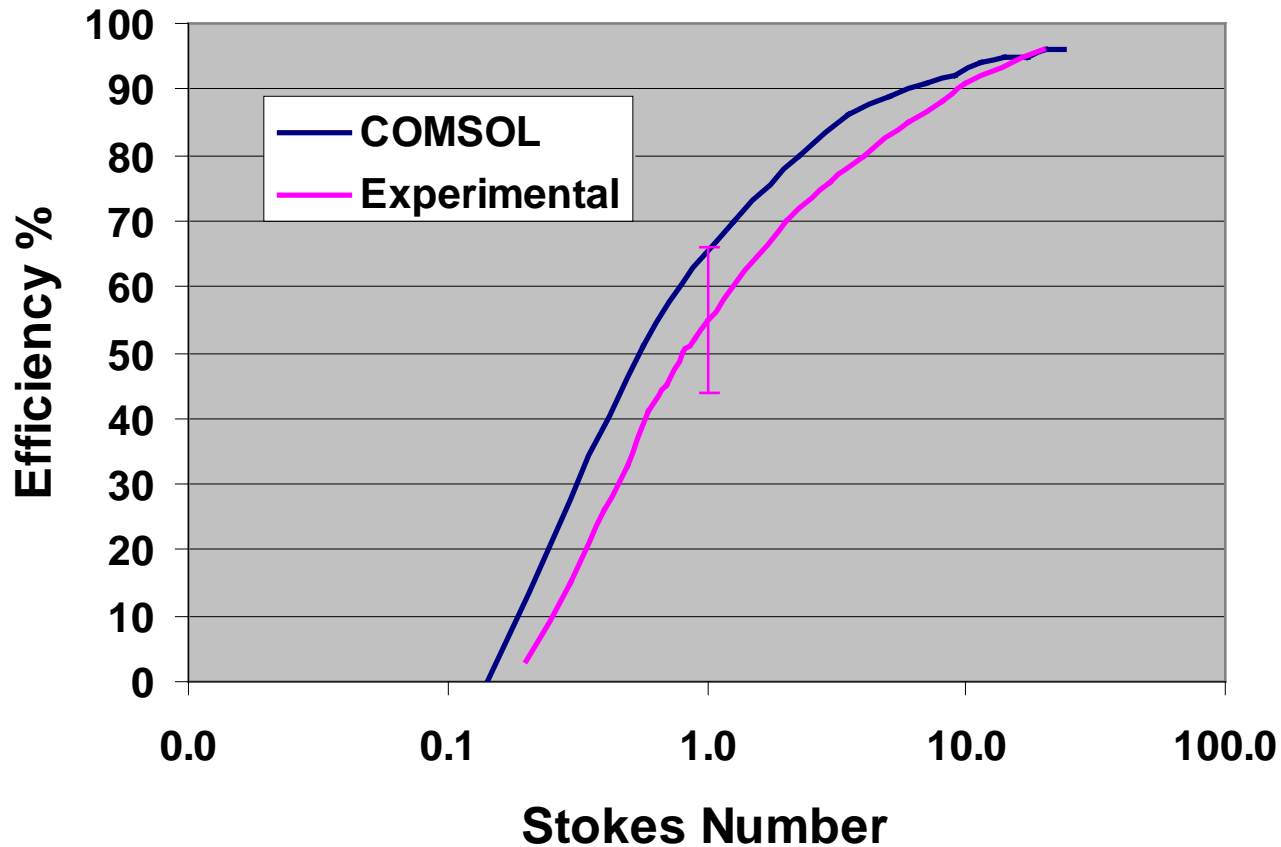
$Stk = 0.04$



$Stk = 10.0$



Comparison with data



Reference: *May & Clifford. 1967, Ann. Occup. Hyg. 10, pp.83-95.*

Conclusions

- $k-\varepsilon$ model captures the flow behavior
- MATLAB facilitates iterations
- COMSOL results agree with published data
- Convenient method to extend to other geometries